

FMNEAR Moment Tensor

181205_171213_13IzA

Vectores horizontales y
Amplitud de deformacion vertical = contornos

Componente vertical:

dU min, max: -0.02 , 0.02 cm



Mw= 5.5

Long. Lat. Prof. : -71.710 -33.690 50.0

Azi. Dip Rake : 115 45 179

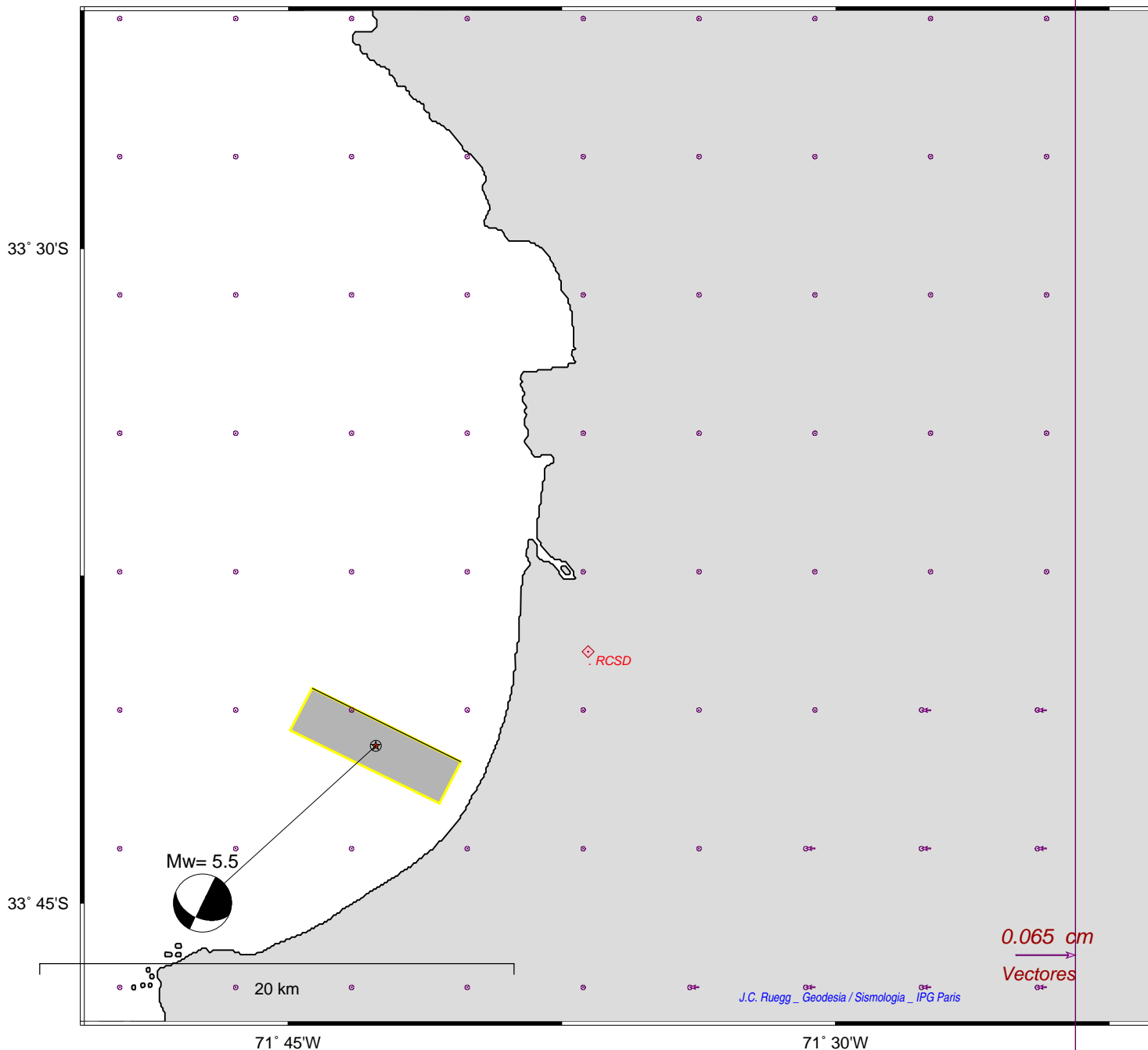
Hmin, Hmax: 49.028 , 50.972 km

slip= 0.278 m

- plano nodal : A

Vectores de amplitud:

dV min, max: 0 , 0.01 cm



J.C. Ruegg - Geodesia / Sismologia - IPG Paris

/home/ruegg/FINAL_prgNEW/GMT_JB2.cpt

prog: gmt_TTT5_x.bat